

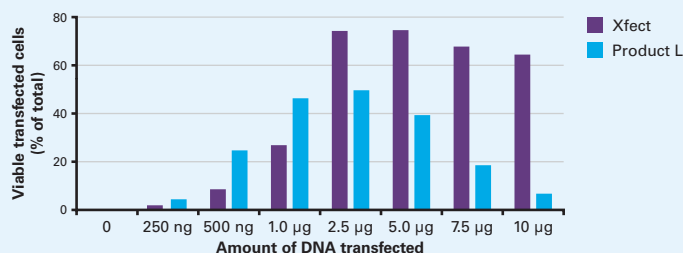
xfect™ — Transfect more cells ...without killing them!

Xfect rewrites the rules

An obvious way to increase transfection efficiency is to increase the amount of DNA/transfection reagent mixture that you add to your cells. Unfortunately, since most transfection reagents damage cells during transfection, simply using more of it is not an option.

Xfect is different! Xfect is a biodegradable transfection polymer, screened from a pool of 2,300 candidates for its very low cytotoxicity profile and high transfection efficiency. Xfect allows you to increase your transfection efficiency to the level you need... without killing your cells.

HeLa cells that are both viable and transfected



I was surprised...shocked!

"I have been doing research with primary rat cardiomyocytes... for more than seven years, and plasmid transfection (of these cells) is not easy. I previously believed that the best method was using Lipofectamine™ 2000 with Plus Reagent and an overnight incubation with Opti-MEM®.

Xfect was better than this Lipofectamine method... I was surprised (shocked!)

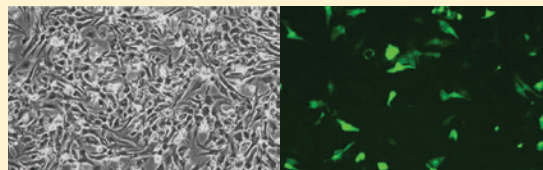
We will switch to Xfect. High efficiency, no toxicity(!), easy procedure, and low cost.

Thank you for providing such a nice product. I want to tell this to everyone engaging in myocyte biology."

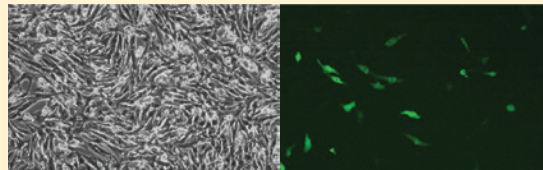
Norimichi Koitabashi, MD, PhD

Research Fellow, Johns Hopkins Medical Institutions

Xfect™



Product L



Ordering Information

Product	Size	Cat. No.
Xfect	100 rxns	631317
	300 rxns	631318

Notice to Purchaser

The use of these products and technologies may be governed by one or more licensing agreements. To view specific and current licensing information for any Clontech product, please consult the product's webpage on our website at www.clontech.com

Lipofectamine™ is a trademark and Opti-MEM® is a registered trademark of Life Technologies Corporation.

Clontech Laboratories, Inc.

A Takara Bio Company

www.clontech.com

United States/Canada: +1.800.662.2566 • Asia Pacific: +1.650.919.7300 • Europe: +33.(0)1.3904.6880 • Japan: +81.(0)77543.6116
For Research Use Only. Not for use in diagnostic or therapeutic procedures. Not for resale. Clontech, the Clontech logo, and all other trademarks are the property of Clontech unless noted otherwise. ©2009 Clontech Laboratories, Inc.

FL9Z3350 IN



xfect™ – Transfect more cells...continued

100 reactions = 2 x 50 reaction kits
 300 reactions = 3 x 100 reaction kits

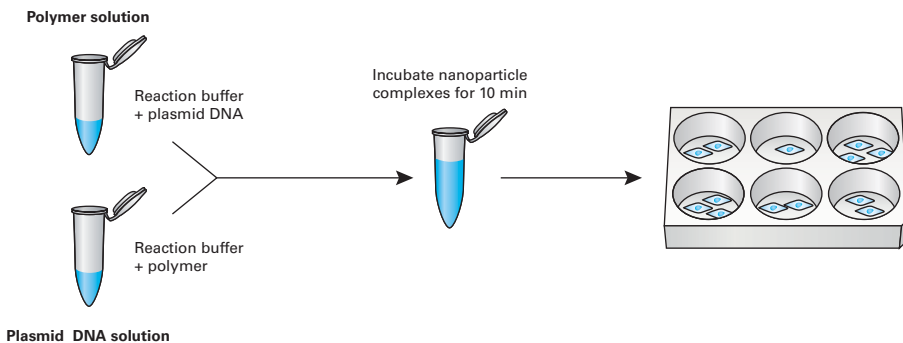


Share without contaminating – convenient format

Xfect is packaged in convenient, separable kits, so if you purchase the 100 reaction kit you can share with your less-than-careful colleagues without fear. *Simply give them half of the kit and hide yours.*

Simple Protocol

Xfect employs a serum compatible protocol—no Opti-MEM® is required. With Xfect, everything is included.



Visit our website for more details! [click here...](#)

Try it for free and let us know how it worked!

We have satisfied customers who use Xfect for these cells and cell lines: HeLa, HEK 293, 293T, NIH/3T3, CHO, Jurkat, MCF7, HT-1080, U2-OS, PC3, hADSCs, hMSCs, P19, BJ fibroblasts, primary rat cardiomyocytes, primary human smooth muscle cells, A431, BHK-21, BSC1, C2C12, Caco-2, HT-28, K-562, MC3T3, MDCK, mesenchymal progenitors, primary myoblasts, RAW 264.7, renal proximal tubules (mouse), SH-SY5Y and WRL68. At Clontech, we've used Xfect to transfect the following cells:

