

Synonym

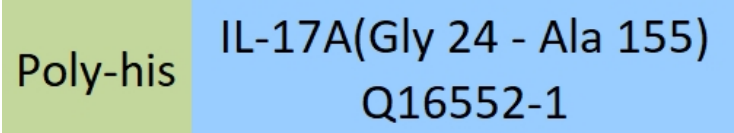
IL-17A,Interleukin-17A,CTLA-8,IL-17

Source

Human IL-17A Protein, His Tag(ILA-H5243) is expressed from human 293 cells (HEK293). It contains AA Gly 24 - Ala 155 (Accession # [Q16552-1](#)).

Predicted N-terminus: His

Molecular Characterization



This protein carries a polyhistidine tag at the N-terminus.

The protein has a calculated MW of 17.0 kDa. The protein migrates as 17-20 kDa and 22-25 kDa when calibrated against [Star Ribbon Pre-stained Protein Marker](#) under reducing (R) condition (SDS-PAGE) due to glycosylation.

Endotoxin

Less than 1.0 EU per µg by the LAL method / rFC method.

Purity

>95% as determined by SDS-PAGE.

>90% as determined by SEC-HPLC.

Formulation

Lyophilized from 0.22 µm filtered solution in PBS, pH7.4 with trehalose as protectant.

Contact us for customized product form or formulation.

Reconstitution

Please see Certificate of Analysis for specific instructions.

*For best performance, we strongly recommend you to follow the reconstitution protocol provided in the CoA.*

Storage

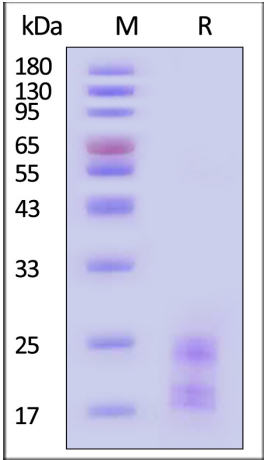
For long term storage, the product should be stored at lyophilized state at -20°C or lower.

*Please avoid repeated freeze-thaw cycles.*

This product is stable after storage at:

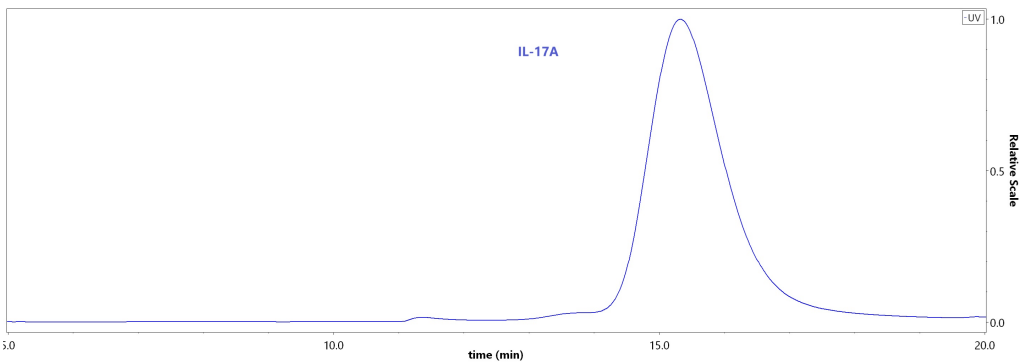
- -20°C to -70°C for 12 months in lyophilized state;
- -70°C for 3 months under sterile conditions after reconstitution.

SDS-PAGE



Human IL-17A Protein, His Tag on SDS-PAGE under reducing (R) condition. The gel was stained with Coomassie Blue. The purity of the protein is greater than 95% (With [Star Ribbon Pre-stained Protein Marker](#)).

SEC-HPLC



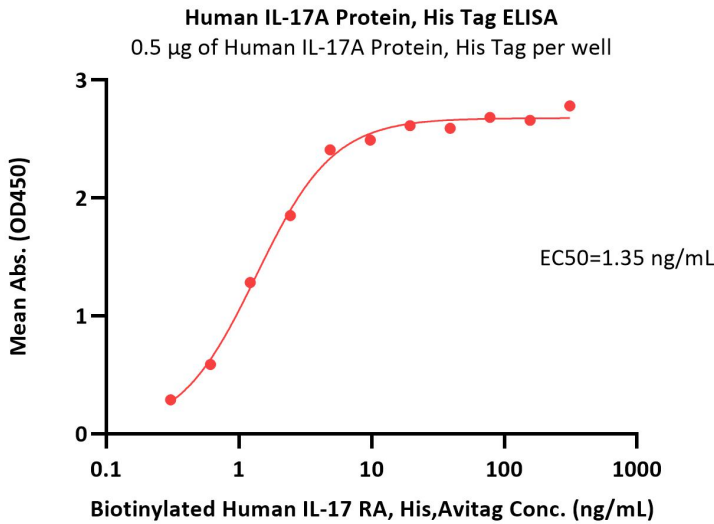
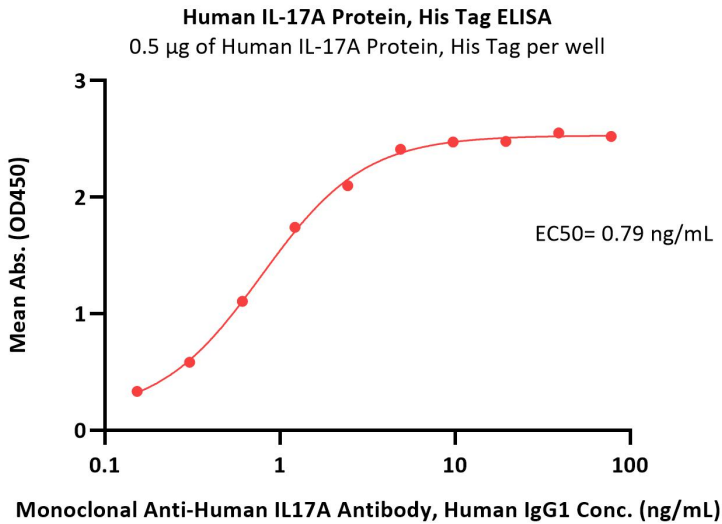
The purity of Human IL-17A Protein, His Tag (Cat. No. ILA-H5243) was greater than 90% as determined by SEC-HPLC.

Bioactivity-ELISA



Human IL-17A / CTLA-8 Protein, His Tag (HPLC verified)

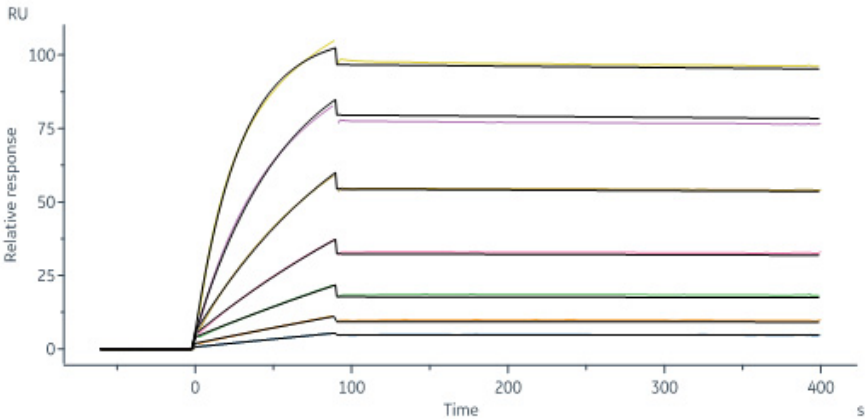
Catalog # ILA-H5243



Immobilized Human IL-17A Protein, His Tag (Cat. No. ILA-H5243) at 5 µg/mL (100 µL/well) can bind Monoclonal Anti-Human IL17A Antibody, Human IgG1 with a linear range of 0.2-2 ng/mL (QC tested).

Immobilized Human IL-17A Protein, His Tag (Cat. No. ILA-H5243) at 5 µg/mL (100 µL/well) can bind Biotinylated Human IL-17 RA, His,Avitag (Cat. No. ILR-H82E5) with a linear range of 0.3-5 ng/mL (Routinely tested).

Bioactivity-SPR



Human IL-17 RA Protein, Fc Tag (Cat. No. ILA-H525f) captured on Protein A Chip can bind Human IL-17A Protein, His Tag (Cat. No. ILA-H5243) with an affinity constant of 0.360 nM as determined in a SPR assay (Biacore 8K) (Routinely tested).

Background

Interleukin-17A (IL17A) is also known as cytotoxic T-lymphocyte-associated antigen 8 (CTLA8), which is a proinflammatory cytokine produced by activated T cells. IL17A can regulate the activities of NF-kappaB and mitogen-activated protein kinases. Also, IL17A can stimulate the expression of IL6 and cyclooxygenase-2 (PTGS2/COX-2), as well as enhance the production of nitric oxide (NO). Furthermore, IL17A has been found both in glycosylated and nonglycosylated forms. High levels of IL-17 are associated with several chronic inflammatory diseases including rheumatoid arthritis, psoriasis and multiple sclerosis.

